

The road less traveled.

As part of the federal permitting process to produce the Environmental Impact Statement (EIS), the U.S. Army Corps of Engineers (USACE) identified the “Northern Route” along the north shore of Iliamna Lake to Cook Inlet as the preferred transportation corridor.

1 Ore concentrate will be transported by pipeline rather than truck.

The **concentrate pipeline will be buried** in a corridor adjacent to the access road. For bridged river crossings, it will be **attached to the bridge structure itself** for safety and security.

2 Drastically fewer daily round trips as compared to alternatives.

By using pipelines for concentrate, water return, and natural gas, the **number of truck round trips is significantly lower**. This reduces the impact on local communities.

3 Stream crossings exceed Alaska Fish & Game & DOT standards.

Bridges and road culverts at stream crossings will be **designed and sized for fish passage** and based on U.S. Fish & Wildlife criteria with oversight from Alaska’s state agencies.



Why the Project is Safe

This is one of several fact sheets related to developing the Pebble Deposit. Read FAQs and more by visiting www.PebbleUpdate.com

Making the connection.

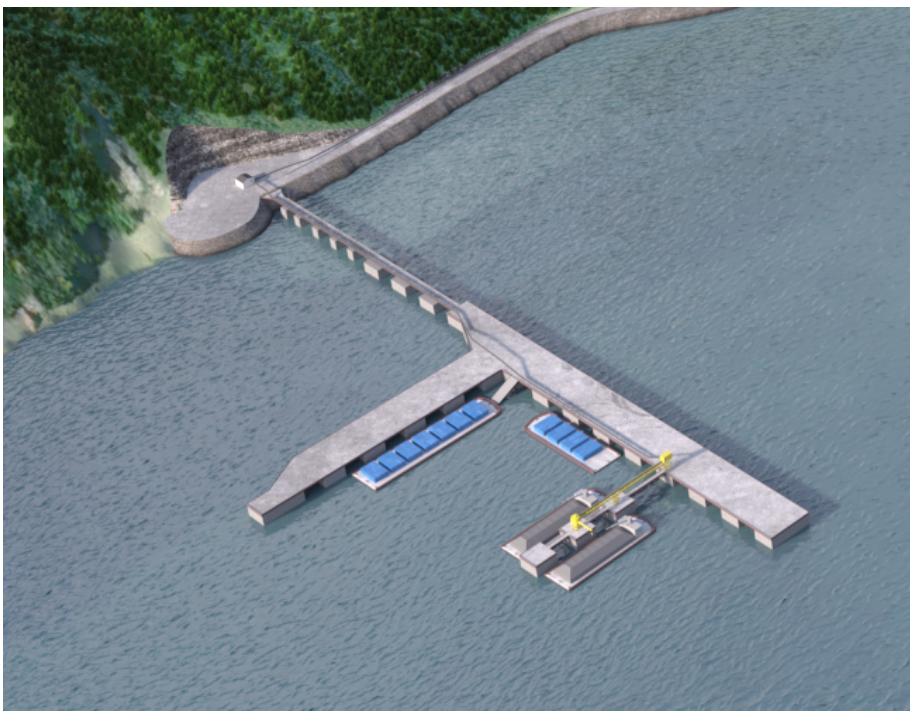
The transportation corridor connects the proposed port near Diamond Point in Iliamna Bay to the mine site via a private, two-lane, gravel access road. It will parallel and replace portions of the existing Williamsport–Pile Bay road and intersect the existing Iliamna/Newhalen road system.

The road will be capable of **supporting anticipated development and operational activities during construction** and supply truck haulage from the port to the mine site.

The **natural gas pipeline, concentrate pipeline, water return pipeline, and fiber optic cable** will be buried in a corridor adjacent to the access road. For bridged river crossings, the pipelines will be **attached to the bridge structures**.

Transportation Corridor Traffic

To facilitate **efficient cargo movement**, most material will be transported in shipping containers. Inbound Project cargo and consumables will be transported using **standard 20 or 40-foot ISO containers for ocean freight**. Diesel fuel will be transferred from the proposed port near Diamond Point in Iliamna Bay to the mine site using ISO tank-container units, which have a capacity of 6,350 gallons.



Pipelines Mean Safety

Pipelines are used around the world for the safe transport of ore concentrate. Key features include:

- 1** Concentrate and water flow through steel pipes with internal HDPE liners to prevent erosion.
- 2** An integrated cathodic protection system prevents external corrosion.
- 3** A pressure-based leak detection system will protect the pipelines from overpressure events.



Contact the Partnership

3201 C Street, Suite 505
Anchorage AK 99503 USA

www.PebblePartnership.com